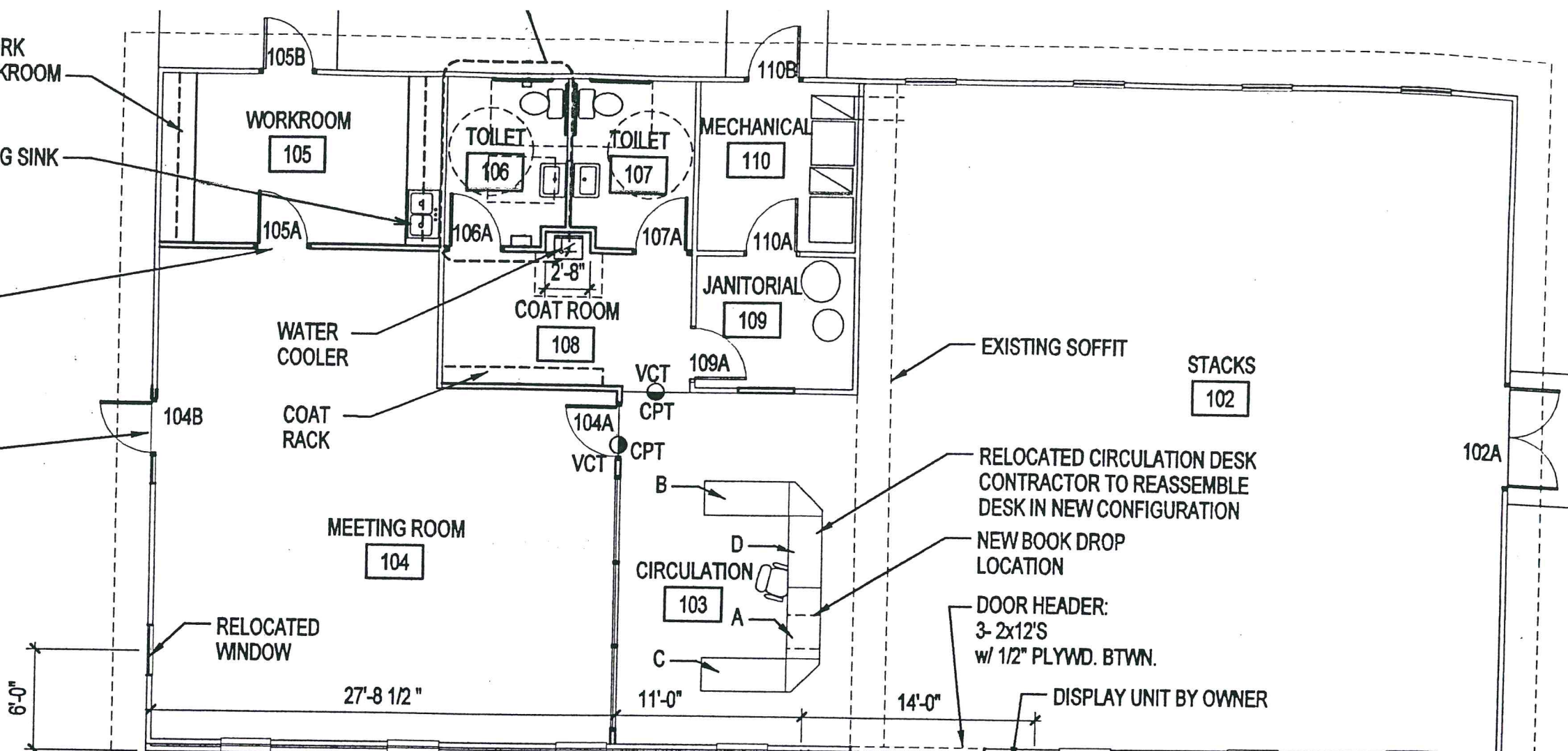


RECONFIGURED AND  
RELOCATED CASEWORK  
FROM EXISTING WORKROOM

SALVAGE EXISTING SINK

NEW DOOR:  
3'-0" x 6'-8"  
SOLID CORE  
WD. DOOR IN  
NEW H.M. FRAME

NEW DOOR:  
3'-0" x 6'-8"  
ALUM DOOR  
AND SIDELIGHT



6'-0"

27'-8 1/2"

11'-0"

14'-0"

FLOOR PLAN LEGED:  
 ——— = EXISTING BUILDING  
 ——— = NEW CONSTRUCTION



**FLOOR PLAN**

SCALE: 1/8" = 1'-0"

(2) RELOCATED  
WINDOWS

4  
A-1

2  
A-1

3  
A-1

7'-0"  
MIN. CLR.

3'-5"

3"

13'-6"

3"

8'-0"

12'-0"

4'-0"

3'-5"